

A Brief Analysis of the Combination of Modern Painting and Ceramic Glazes for Creation

CHE Yiming

Master Che YiMing's Studio, Jingdezhen, Jiangxi, China

The integration of modern painting and ceramic new color creation is a valuable innovative exploration in contemporary art. Modern painting simplifies form, breaks through spatial concepts, and has diverse styles, while ceramic new colors have rich colors, flexible techniques, low cost, and strong adaptability. Their combination promotes ceramic art innovation, and enhances artistic value and aesthetic experience. Combining in techniques, theme and content borrowing, and style integration benefits artistic creation. The internal laws and artistic value of this combination offer a promising future. Deep integration injects contemporary vitality into traditional ceramic art, expands artistic expression boundaries, and provides references for contemporary artistic creation.

Keywords: modern painting, ceramic new colors, art creation

Introduction

The integration of modern painting and ceramic new color creation is a profound exploration and innovation in art. It's not a simple form-superimposition but a deep-level mutual infiltration. Artistically, modern painting's concepts and techniques bring new vitality to ceramic new color creation, diversifying its forms and content. Culturally, their combination endows traditional ceramic art with contemporary connotations, revitalizing it and providing new carriers for modern painting, promoting art's diversified development.

Characteristics of Modern Painting and Ceramic New Color Creation

Characteristics of Modern Painting

Modern painting, an innovative art form in the early 20th century, left a significant mark in art history. It emphasizes form simplification and flattening, breaking from traditional focus on realism and three—dimensionality, simplifying objects into basic geometric shapes to construct pictures. Simple lines and planar graphics are used for a decorative effect, presenting a simple aesthetic. This effect is created by combining color, lines, and shapes, guiding viewers to understand works from a new perspective.

During its development, many diverse schools emerged. The Fauvism school, represented by Henri Matisse, used bright colors and simple shapes, emphasizing form simplification. Matisse's works were colorful, using primary and contrasting colors. The Cubism school, promoted by Georges Braque and Pablo Picasso, decomposed natural objects into geometric blocks, breaking from traditional visual laws. There was also Expressionism emphasizing artists' emotions, Abstractism divided into different types expressing inner spirit, and Surrealism

exploring the unconscious. These school developments promoted modern painting's diversification and innovation, making it a colorful period in art history.

Characteristics of Ceramic New Color Creation

New color, a glaze-painting art in ceramics, originated from Western techniques introduced to China in modern times. In the late Qing and early Republic, Jingdezhen artists combined Western pigments and decoration with traditional colored-porcelain techniques, forming the rudimentary “洋彩”, using mostly imported materials and imitating Western styles. After the 1950s, it achieved domestic pigment production, absorbed Chinese painting techniques, and was named “新彩”.

New color has unique characteristics. Its colors are rich, delicate, soft, with various types and good luster. Pigments are made by combining metal-oxide colorants with silicate binders. Colors during application are similar to those after firing, making color use convenient, and they can be mixed for different flavors and textures. In terms of techniques, new color painting styles are diverse with flexible techniques. It can use delicate lines and rich colors for realistic depiction or simple brushstrokes for freehand creation. It can also draw on expression techniques of various art forms to create unique effects. Painting methods include applique, spray painting, etc. Artists can choose appropriate techniques for diverse expressions.

The low cost is a major advantage. Pigments are readily available, and with domestic production, supply is stable and prices are reasonable. The firing temperature is low (600-900 degrees Celsius), saving energy costs compared to some high-temperature firing techniques. The production cycle is short. It enables Xinqai to meet market demands more efficiently. It's suitable for mass-production and can decorate various porcelain shapes, adding charm to tableware. In the modern ceramic industry, Xinqai is a mainstream decorative technique for enhancing daily porcelain value and helping artists create art.

The Significance of Combining Modern Painting with Ceramic Xinqai Creation

Promotion of Ceramic Artistic Innovation and Development

The combination of modern painting and ceramic Xinqai creation promotes ceramic art development. Modern painting's innovative concepts, like breaking traditions and exploring new materials, offer new perspectives to Xinqai creation. Thus, Xinqai creation is no longer restricted to traditional themes and forms, expanding to broader areas. New themes such as modern life and abstract concepts are integrated, reflecting contemporary styles and emotions.

The expression techniques of modern painting inspire Xinqai creation. Its unique composition methods, such as breaking symmetry and pursuing dynamic balance, are applied in ceramic creation, making works more vivid. In color application, it draws on modern painting's emphasis on expressiveness and emotional conveyance. Yance uses bold colors for rich color layers and atmospheres. Innovative use of materials and techniques like mixed media and texture effects bring new possibilities to ceramic Xinqai creation, making works more individual. By combining with modern painting, the style of ceramic Xinqai creation becomes more diverse and individual, meeting contemporary aesthetic needs, opening new paths for ceramic art innovation, and giving it vitality.

Enhancement of Artistic Value and Aesthetic Experience

The integration of modern painting and ceramic Xinqai creation enriches artistic forms, creates unique charm, and enhances the works' artistic value, bringing a new aesthetic experience. From an artistic expression perspective, modern painting emphasizes form innovation and direct emotion expression, while ceramic Xinqai

relies on unique material techniques with material, technical, and color beauty. When combined, the free nature of modern painting and the delicate nature of ceramic Xinqai blend, forming a new artistic language. The fused ceramic Xinqai works have the expressive power of modern painting and retain the unique charm of ceramics, presenting a simple and elegant aesthetic. In terms of aesthetic experience, this combination allows viewers to feel... This not only showcases the cultural heritage and craftsmanship of traditional ceramics but also the innovative thinking and era spirit of modern painting. Composition, color, brushstrokes, and ceramic texture bring visual impact; the conveyed emotions and thoughts touch the audience, evoke resonance, offer aesthetic enjoyment and spiritual enlightenment, enhance the works' artistic value, expand the audience's aesthetic vision, and enable a deeper understanding of art.

Ways of Combining Modern Painting With Ceramic Xinqai Creation

Technique Integration

In ceramic Xinqai creation, borrowing modern painting's brushstrokes, color application, and texture expression techniques can enhance works' vitality and expressiveness. In modern painting, brushstrokes express emotions and shape images, with different strokes having different expressiveness. Creators can apply colors according to the work's theme and emotions, using bold strokes for power and passion, and delicate ones for subtle emotions.

Color application, a core element of modern painting, influences the audience's emotions and visual perception. Using modern painting techniques in ceramic new-color creation enriches the works. Modern painting uses bright colors, contrast, and harmony techniques. Contrasting colors have a strong visual impact, while harmonious colors create a harmonious atmosphere. Creators can use them to create a layered and rhythmic color effect and select cold and warm colors according to the theme and emotional tone.

The exploration of texture expression in modern painting offers new ideas for ceramic new-color creation. Texture can enhance the work's authenticity and appeal. Creators can express texture effects through techniques like scratching, carving, spraying, and different materials and tools, improving the work's artistic expression and bringing a new visual experience.

Theme and Content Borrowing

Integrating modern painting themes like society, nature, and human nature into ceramic new-color creation is important for adding contemporary connotations. In modern society, social issues are complex. Modern painting often uses social hotspots as themes. Integrating social themes into ceramic new-color creation can make works reflect social reality and trigger audience reflection, such as using themes of environmental pollution, social equity, and technological development. For example, a work on environmental pollution can use dark tones and distorted images to arouse environmental protection attention. Nature is an eternal art theme, and modern painting focuses on ecology and the human-nature relationship. Ceramic new color creation can draw on this to present nature's beauty and mystery and convey reverence and protection. It can depict nature-city integration or ecosystem balance, like a work on a city's natural corner to express concern for natural living space. Humanity is a complex theme, and modern painting explores it through character and emotion portrayal. Ceramic new color creation on humanity can make works more emotionally resonant. It can use character expressions and actions to show the inner world, like a work on maternal love to let the audience feel humanity's warmth and strength.

Style Fusion

Combining modern painting styles such as abstractionism and surrealism with the creation of new ceramic colors forms a unique artistic style, breaks traditional ceramic decorative patterns, and shows modern art's innovative spirit. Abstractionism emphasizes form and color purity, expressing emotions through line, shape, and color combinations. Integrating it into new-ceramic-color creation allows works to break free from concrete images, being free and lively. Creators use simple elements to create abstract patterns for audience interpretation. Surrealism draws inspiration from dreams, fantasies, and the subconscious, combining reality and illusion. Introducing it into new-ceramic-color creation adds fantasy and imagination. Creators break reality logic and spatial limits, combining distorted elements for a dream-like scene, bringing a beyond-reality visual effect and arousing audience curiosity. This combination breaks traditional ceramic decoration patterns, makes works more individual and innovative, and offers a new visual and aesthetic experience, enabling ceramic art to shine in the contemporary era.

Conclusion

The combination of modern painting and ceramic new color creation is an innovative art exploration, bringing new vitality to ceramic art. Modern painting is innovative in form, space, and genre, and ceramic new color creation has advantages in color, technique, etc., laying the foundation for the combination. Semantically, it promotes ceramic art innovation, makes it closer to contemporary life, meets diverse aesthetic demands, and offers new visual and spiritual experiences. The combination methods include technique integration, theme and content borrowing, and style integration. In the future, with social development and aesthetic changes, the combination is expected to be more extensive and in-depth. Artists will keep exploring, creating more works with contemporary features, further promoting ceramic art development and showing its charm globally.

References

- Du, B. (2014). Color expression and emotional expression in modern western painting. *Literature and Art Criticism*, 31(1), 120-124.
- Greenberg, C., & Zhou, X. (1992). Modernist painting. *World Art*, 14(3), 50-52+40.
- Pan, J. F. (2013). A brief discussion on the glazed decorative techniques and methods of ceramic painting. *Jingdezhen Ceramics*, 41(4), 30-31.
- Zhang, Y. L., & Gao, X. K. (2020). Art in craftsmanship—The dialectics of “Ceramic Decoration” and “Ceramic Painting”. *Chinese Ceramics*, 56(5), 91-95.

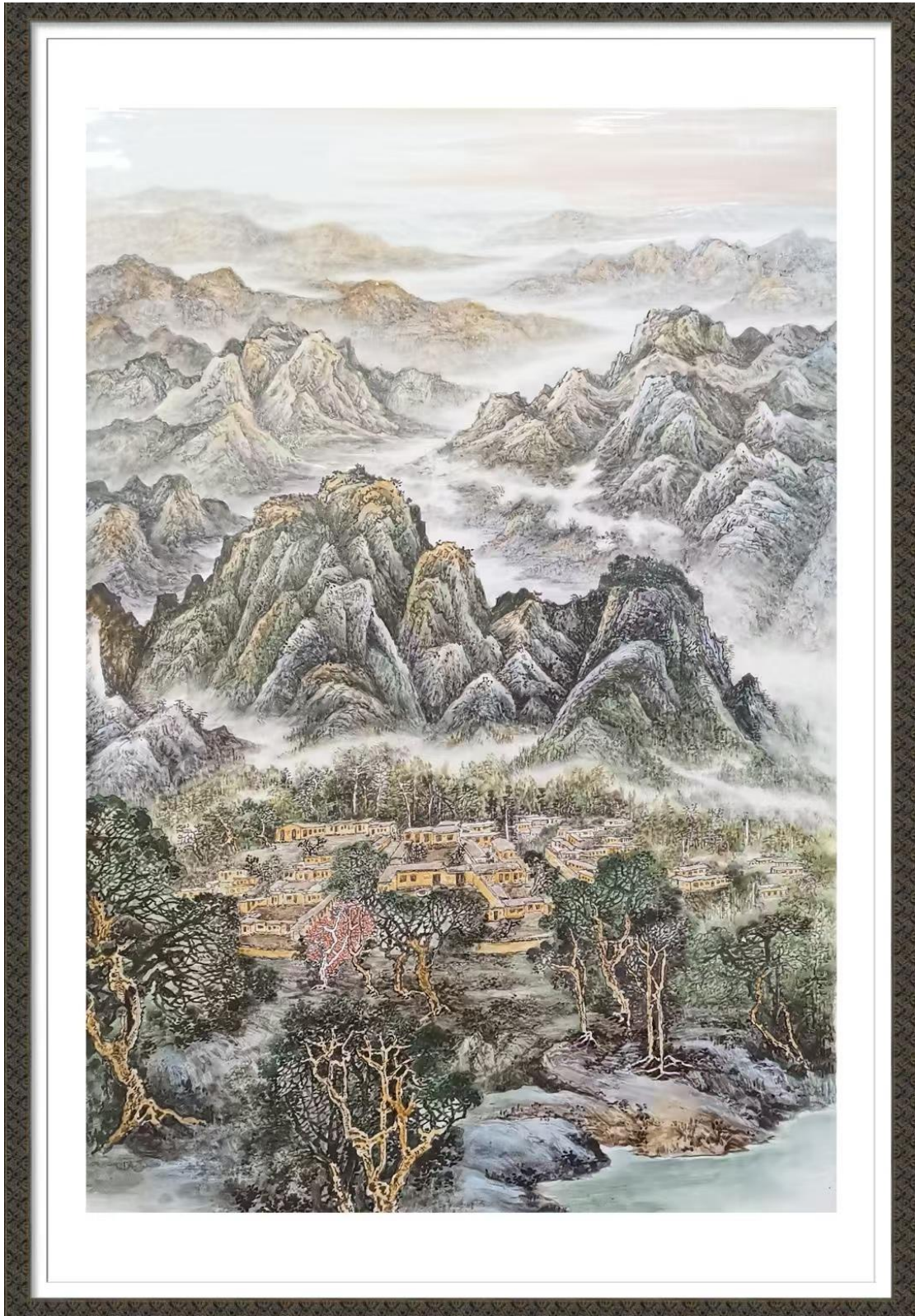


Figure 1. Che Yiming's work: Mountain Scenery.