

Modeling and Simulation of the Thermal Behavior of Nubian Vault Walls

Karim Toussakoe¹, Alidou Maiga¹, Adjigkiga Banouga², Emmanuel Ouédraogo³, Bouto Kossi Imbga⁴, Souleymane Ouédraogo¹, Abdoulaye Compaore⁵, Adélaïde Lareba Ouédraogo¹, Florent Pèlèga Kieno¹, and Sie Kam¹

1. Renewable Thermal Energy Laboratory, Joseph KI-ZERBO University, Ouagadougou, Burkina Faso

2. Materials and Environment Laboratory, Joseph KI-ZERBO University, Burkina Faso

3. Department of Physic and Chemistry, University of Ouahigouya, Ouahigouya, Burkina Faso

4. Laboratory of Research in Energetics and Space Meteorology, Norbert ZONGO University, Koudougou, Burkina Faso

5. National Center for Scientific and Technological Research, Ouagadougou, Burkina Faso

Abstract: In this study, we simulated the thermal behavior of the mud-brick walls of a Nubian vault. We used EnergyPlus software for the simulation. The results obtained showed that the indoor temperature varies from 33.2°C to 33.6°C with an average value of 33.1°C for the month of April 2018. It varies from 25.5°C to 26.5°C for the period of January 2018. For the period of July 18, the indoor temperature varies from 30.3°C to 32.2°C with an average value of 31.2°C. Relative humidity ranged from 62.3% to 73.5%, with an average value of 67.9%. The simulation enabled us to compare simulated and measured temperature and humidity values. We found that the level of thermal comfort in the Nubian vault is acceptable in both cool and hot periods. In view of these results, we can say that the Nubian vault is an architecture suited to our climate. The technical concept of the Nubian vault is adapted to the climatic conditions and traditional know-how of the Sahel. We also found that the use of raw earth, a locally available material, and the Nubian vault architectural process, contribute to thermal comfort and a reappropriation of local and adapted know-how.

Key words: Thermal simulation, architectural technique, temperature, walls, thermal comfort.

1. Introduction

The building and construction sector alone accounts for 40% of total energy consumption and around 35% of greenhouse gas emissions [1]. The building sector must implement new technical and architectural solutions to meet society's expectations in terms of energy savings and climate protection. Against this backdrop, the EnergyPlus dynamic thermal simulation tool aims to provide players with a design aid adapted to these new demands [2]. Modeling consists in applying a certain number of simplifying hypotheses to a real problem, so as to be able to translate this problem mathematically. Dynamic thermal simulation aims to precisely define the thermal behavior of a building as a function of its location in its environment, its geometric

characteristics, the composition of its envelope, and the local climate. Thermal modeling of housing is now our days a common practice, with a range of tools of varying complexity [3].

In particular, modeling enables comfort levels to be assessed, and energy requirements for heating and cooling to be determined for each zone [4].

First, we present the software used for the simulation, EnergyPlus. Next, we present and analyze the results of the simulation of indoor temperature changes as a function of time.

For existing buildings, simulation results are compared with measured temperatures over a given period to validate the model.

2. Materials and Methods

The building's dimensions and geometric shapes were modeled using OpenStudio and google sketchup, which enable 3D modeling. This concerns the walls,

roof and openings. The building plan is shown in Fig. 1.

The monozone model considers the building as a whole as an enclosure with perfectly uniform internal characteristics. Fig. 2 shows the geometry of the building studied.

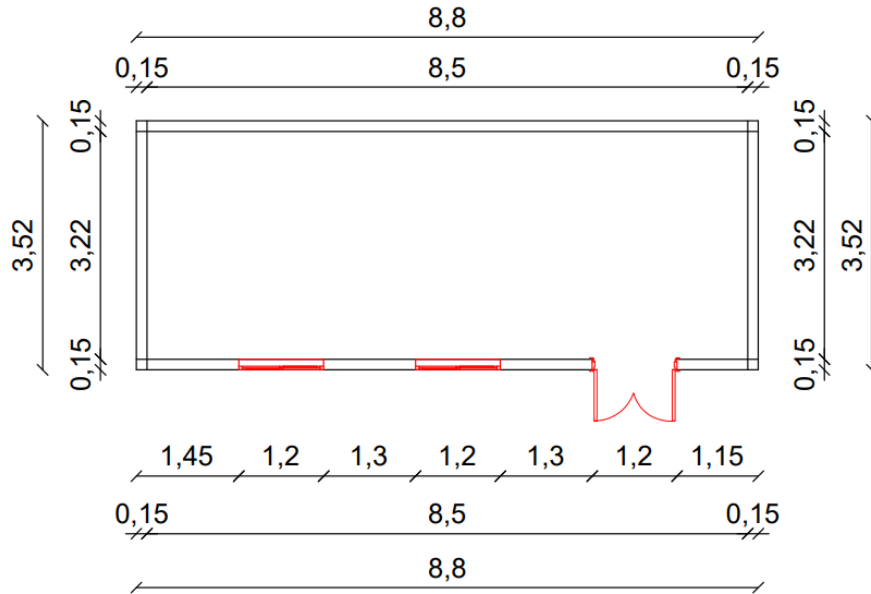


Fig. 1 Building level plan.

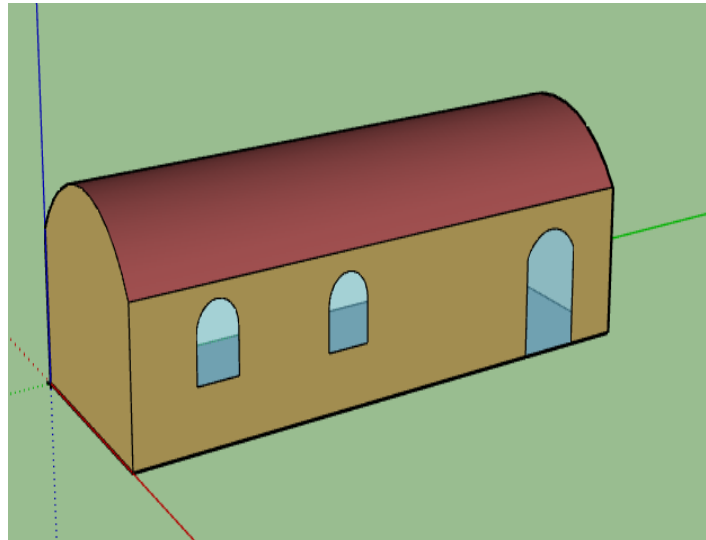


Fig. 2 Building geometry in sketchup.

The thermal zoning adopted is probably the most important modeling assumption, as it can impose strong constraints on the applicability of the model. A thermal zone corresponds to a space (air mass) considered to have a homogeneous temperature. There are several zoning approaches, each with its own

advantages and limitations.

The monozone model is the simplest, since it treats the building as a single zone with a uniform temperature [5].

It's the fastest in terms of calculation time, but doesn't take into account temperature heterogeneity

between building zones. For example, no distinction is made in terms of temperature between rooms to the north and those to the south.

The multi-zone model consists in dividing the building into several zones (not necessarily one zone per room), ensuring that rooms belonging to the same zone have similar behaviors. The division can be made

according to the orientation of the rooms, the different internal loads linked to different uses. This model remains interesting in terms of calculation time, but it has limitations when it comes to handling large volumes and characterizing the local effects of heating, cooling or pollutant sources. Fig. 3 shows the flow chart of the EnergyPlus software [6].

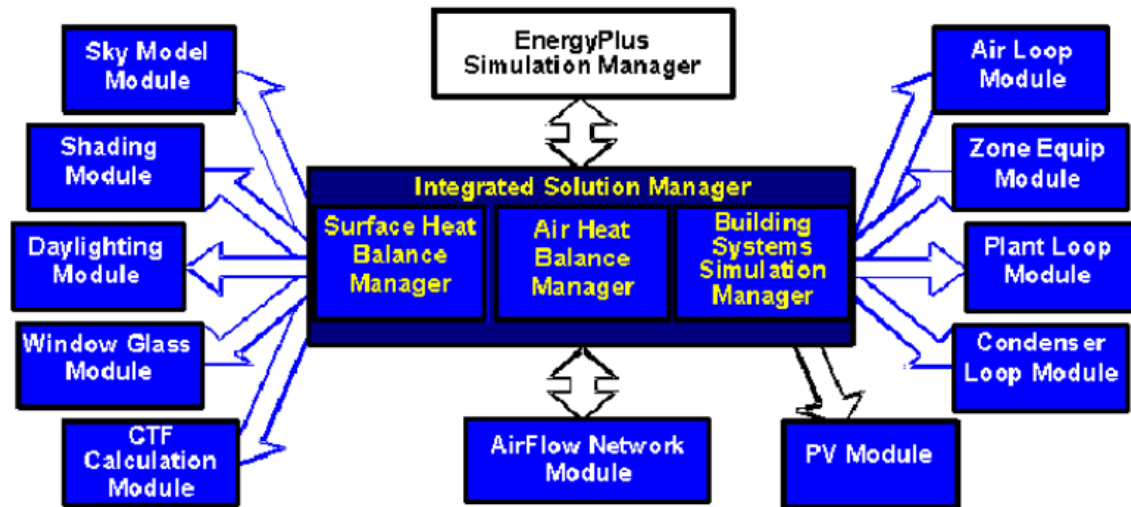


Fig. 3 EnergyPlus chart [6].

The core of the building model is based on two former DOE monolithic simulation programs: BLAST and DOE-2, and the FORTRAN 90 programming language.

It does not have its own graphical interface, but several are available on the market, and an “OpenStudio” plug-in has recently been developed to use the GOOGLE SKETCH'UP 3D modeler for input data and simulation results processing.

The model considered is the monozone model in our case, as our building contains only one compartment.

3. Results

The different coefficient values obtained range from 0.71 to 0.95, so the results are acceptable, as the coefficients should be between 0.5 and 1. The simulation concerned indoor temperature and relative humidity. Figs. 4 and 5 were obtained.

Fig. 4 compares model predictions with

measurements of average indoor air temperatures. It can be seen that measured and simulated values behave similarly.

The indoor temperature varies from 25.5°C to 26.5°C. We note a maximum deviation tending towards 1°C. This can be explained by overheating during the day and cooling at night. The correlation coefficient between measured and experimental indoor temperatures is 0.79. The work of A. Kaboré (2020) [7] reveals interior surface temperatures of hemp concrete walls that range from 21.6°C to 24.5°C compared to compressed earth brick and cement block walls, whose interior temperatures are between 21°C and 27°C respectively 19°C and 29°C.

Temperatures ranged from 33.2°C to 33.6°C, with an average value of 33.1°C.

The correlation coefficient between measured and simulated indoor temperatures is 0.95. Fig. 5 shows the evolution of the measured and simulated indoor

temperature for the day of July 18, 2018.

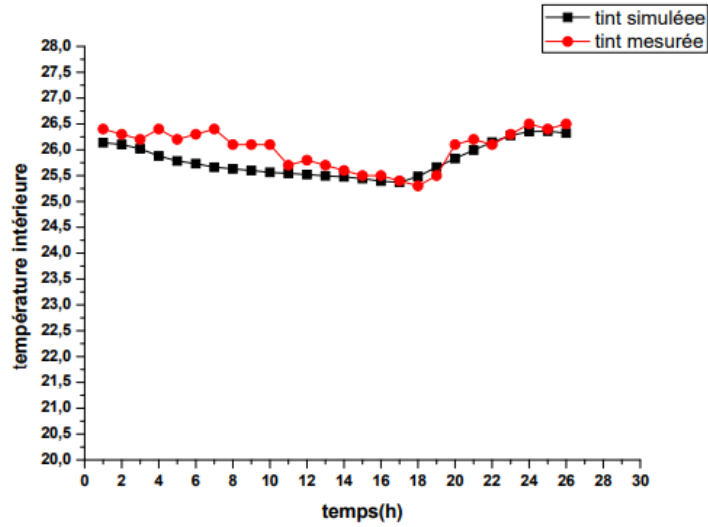


Fig. 4 Indoor and simulated temperature on January 14, 2018.

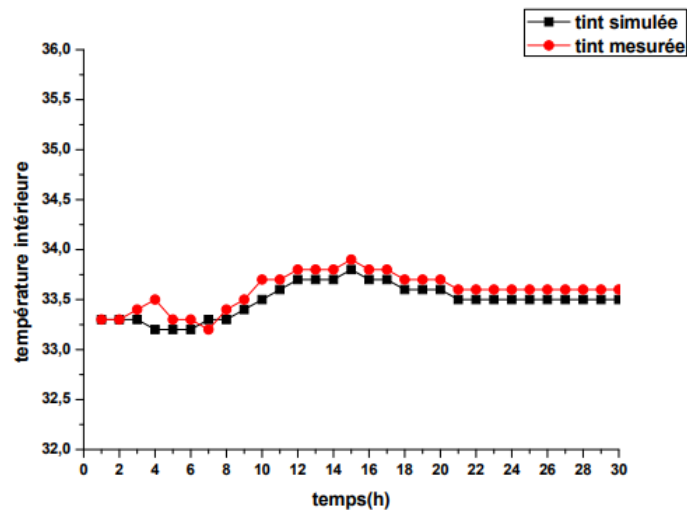


Fig. 5 Simulated and measured indoor temperature on April 07, 2018.

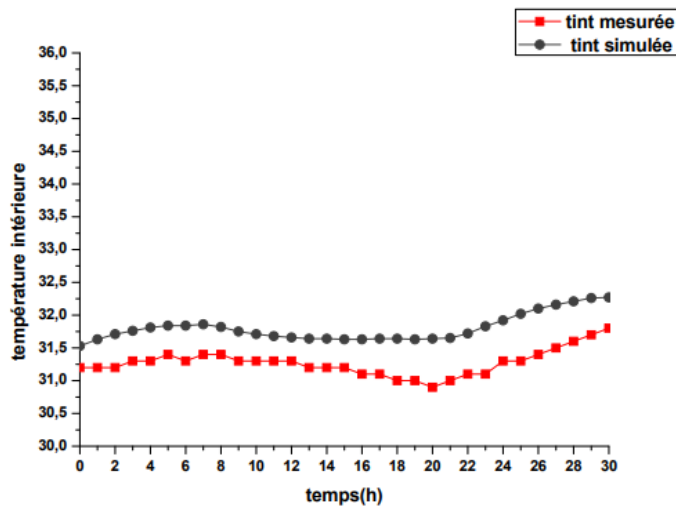


Fig. 6 Internal temperature measured and simulated on July 18, 2018.

Temperatures ranged from 30.3°C to 32.2°C, with an average value of 31.2°C. On this day, the sky was clear

of clouds. Fig. 7 shows the evolution of relative humidity obtained by experiment and that simulated.

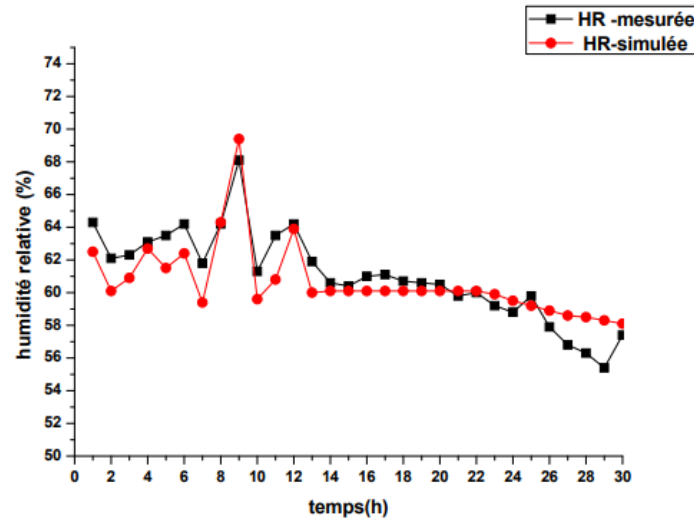


Fig. 7 Measured and simulated relative humidity on July 18, 2018.

In their study Impact of insulation and wall thickness in compressed earth buildings in hot and dry tropical regions, Neya et al. (2021) [8] obtained outdoor temperatures ranging from 23°C to 43°C and indoor temperatures ranging from 27°C to 41°C for the reference case.

Relative humidity ranged from 62.3% to 73.5%, with an average value of 67.9%. The correlation coefficient between relative and simulated humidity values is 0.71.

Earth, a building material that has been used for thousands of years, is still used in Burkina Faso, particularly for rural housing. It is perfectly possible to build with unstabilized earth [7, 9]. Experimental results obtained by Shaik & Talanki Puttaranga Setty (2016) [10] reveal an increase in thermal conductivity of 14.7% and specific heat of 9.15% with an increase in the relative humidity of the ambient air in the hygroscopic range.

4. Conclusion

Simulation is a major challenge for the construction and adaptation of buildings to meet the challenges of energy and climate change. Notwithstanding the shortcomings associated with their use by building professionals, simulation software can be used to assess

the energy and thermal performance of buildings. These shortcomings may be linked to limitations on input data, assumptions made on the basis of the zoning model, or air transfers between zones and the outside, or between the zones themselves.

However, it should be noted that experimental measurement is used to validate models and simulations and to discover new, unknown phenomena or for validation purposes, whereas simulation is used to understand the interactions of known system components and system behavior. Simulation enabled us to obtain theoretical temperature and humidity values and compare them with experimental values. The study revealed that the indoor temperature ranged from 33.2°C to 33.6°C, with an average value of 33.1°C for the month of April 2018. 25.5°C to 26.5°C for the period of January 2018. For the period of July 18, the indoor temperature ranged from 30.3°C to 32.2°C, with an average value of 31.2°C. Relative humidity ranges from 62.3% to 73.5%, with an average value of 67.9%.

The results obtained are valid, as the correlation coefficients obtained are between 0.5 and 1. With regard to the results, we note that the level of thermal comfort obtained is acceptable in Nubian vault housing.

Comfort is also acceptable in hot weather, despite low temperatures. This level of comfort can be improved by passive air-conditioning or wall insulation. This work shows the relevance of using adobe and the Nubian vault model in housing. This study will be extended to the thermal behavior of walls, taking into account thermal bridges and heat sources.

Acknowledgement

We would like to thank ISP at Uppsala University, Sweden, for their support of the BUF01 project [11-18].

References

- [1] OIF (2015). Guide du bâtiment durable en régions tropicales. Tome 1: Stratégies de conception des nouveaux bâtiments.
- [2] Mahdad, M., Hammas, A., Abboudi, S., & Chalah, K. (2023). Etude analytique en régime dynamique des performances thermiques des parois en blocs de terre stabilisée, *Academic Journal of Civil Engineering*, 40 (2): 1-9, available online at: <https://journal.augc.asso.fr/index.php/ajce/article/view/3379>.
- [3] Allibe, B., Osso, D., Laurent, M., Allibe, B., Osso, D., Modélisation, M. L., Allibe, B., Osso, D., Laurent, M., Enerbat, D., & Moret, R. (2019). Modélisation thermique du chauffage individuel : d' un logement unique à l' ensemble du parc.
- [4] Olivier, M., & Mesbah, A. (2016). Construire en terre crue de Guyane, pp. 1-7.
- [5] Imbga, K. B. (2017). Thèse présentée Docteur de l' Université de Mes Parents, Université OuagaI Pr Joseph KI-ZERBO.
- [6] Kaboré, M. (2015). *Enjeux de la simulation pour l' étude des performances énergétiques des bâtiments en Afrique sub-saharienne*, p. 192.
- [7] Kaboré, A. (2020). *Modélisation hygrothermique de l'enveloppe du bâtiment avec le matériau de chanvre*, pp. 1-252.
- [8] Neya, I., Yamegueu, D., Coulibaly, Y., Messan, A., & Ouedraogo, A. L. S. N. (2021). Impact of insulation and wall thickness in compressed earth buildings in hot and dry tropical regions, *Journal of Building Engineering*, 33. <https://doi.org/10.1016/j.job.2020.101612>.
- [9] Miraucourt, D. (2017). Stabilisation du matériau terre crue pour application en brique de terre comprimée au Burkina Faso [2ie], available online at: <https://matheo.uliege.be/handle/2268.2/2539>.
- [10] Shaik, S., & Talanki Puttaranga Setty, A. B. (2016). Influence of ambient air relative humidity and temperature on thermal properties and unsteady thermal response characteristics of laterite wall houses, *Building and Environment*, 99 (October): 170-183, doi: 10.1016/j.buildenv.2016.01.030.
- [11] A. Haroun Tchakblo, Nadjitonon Ngarmaim, Djegoldé Kormbaye, A. D., & S. G. (2024). Optimizing the formulation of concretes used in residential buildings in Chad A, *International Journal of Advanced Research*, 7 (10): 1339-1346, doi: 10.21474/IJAR01/19823.=0.00005.
- [12] Hanafi, A. (2016). Stratégie d' amélioration du confort thermique d' une place publique d' une ville saharienne' Biskra/Algérie', *Revue Des Energies Renouvelables*, 19 (3) 465-480.
- [13] Privat, S. (2018). *La voûte en briques crues dans le contexte funéraire nubien*, pp. 42-46.
- [14] El Kadri, M. (2020). Modèle thermo-neurophysiologique du corps humain pour l' étude du confort thermique en conditions climatiques hétérogènes et instationnaires, July.
- [15] Millogo, Y., Aubert, J., Séré, A. D., Millogo, Y., Aubert, J., Séré, A. D., Fabbri, A., & Morel, J. (2018). Earth blocks stabilized by cow-dung to cite this version : HAL Id : hal-01876848. *Materials and Structures*, 49 (11): 4583.
- [16] Claude Boris Amougou (2018). Validation d' un modele de simulation thermique dynamique a partir de mesures experimentales sur des batiments pilotes.
- [17] Bennai, F., Abdelkarim, B., Aissani, L., Mezaache, N. A. E., Leila, R. R., Sanchez, F., Budinger, M., Donjat, D., & Hazyuk, I. (2016). Modelisation des phenomenes de transfert de chaleur et de masse dans les milieux poreux hygroscopiques, These, June, 179.
- [18] Fantin, M. (2018). Étude des rapports entre stéréotomie et résistance des voûtes clavées.